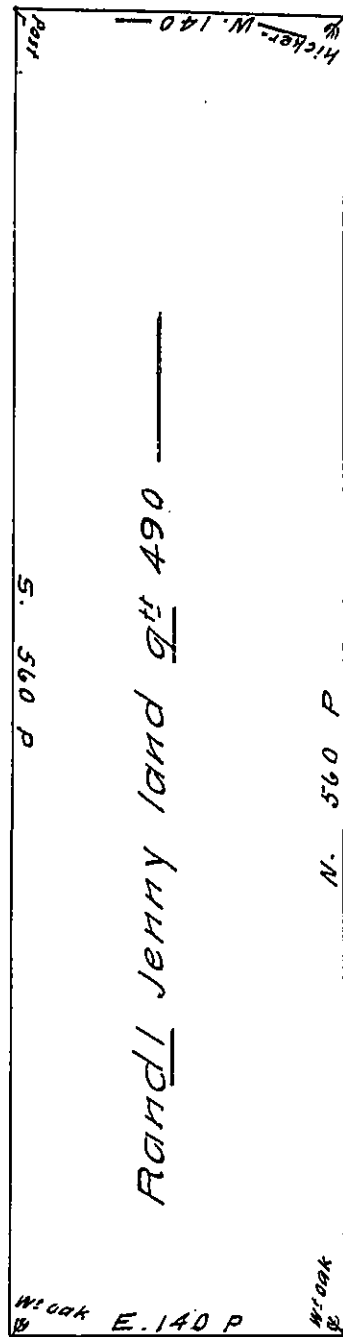


James BROWN Land



John Churchman land

By virtue of a Warrant to me directed dated ye 7<sup>th</sup> 1<sup>st</sup> m. 1701 I have surveyed unto Randel Jenny a tract of land in Nottingham begining A A corner white oak being a corner of John Churchmans land thence North by his line 560 p<sub>ch</sub> to a corner hickory thence West 140 p<sub>ch</sub> to a corner post being a corner of James Browns land then by his line South 560 p<sub>ch</sub> to a wt oak thence Est 140 p<sub>ch</sub> to the place of begining containing 490 acres the 15<sup>th</sup> 3<sup>rd</sup> m 1702.

*H* Henry Hollingsworth

IN TESTIMONY that the above is a copy of the original remaining on file in the Department of Internal Affairs of Pennsylvania, made conformably to an Act of Assembly approved the 16th day of February, 1833, I have hereunto set my Hand and caused the Seal of said Department to be affixed at Harrisburg, this twenty second day of April 1910

*Nancy Howck*

Secretary of Internal Affairs.